

**HEAVY MACHINERY AHEAD-**  
**stay back 200' from all operating equipment**

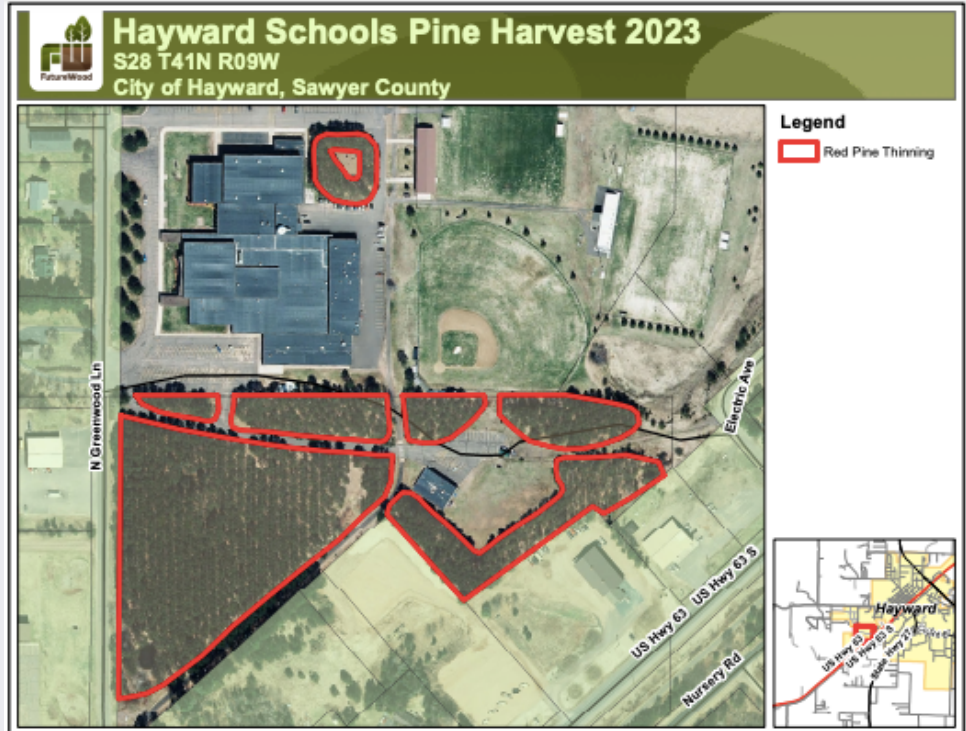


# TIMBER HARVEST NOTICE



**FUTUREWOOD CORP**

<https://www.futurewoodcorp.com/>



## ABOUT THIS PROJECT

As part of a Senior Capstone project by Northern Waters Environmental School student, a timber harvest will be conducted on the 9 acre red pine plantation surrounding our school.

We are working with the district and FutureWood Corp to conduct the harvest. Students will gain an understanding of forestry and the forest products industry and make future recommendations for this property.

## SUSTAINABLE HARVEST

- ✓ WI Silviculture Handbook recs.
- ✓ Best Management Practices

### CONTACT:

**Kate Witkowski** (educator)



+715-638-9428



[kwitkowski@hayward.k12.wi.us](mailto:kwitkowski@hayward.k12.wi.us)